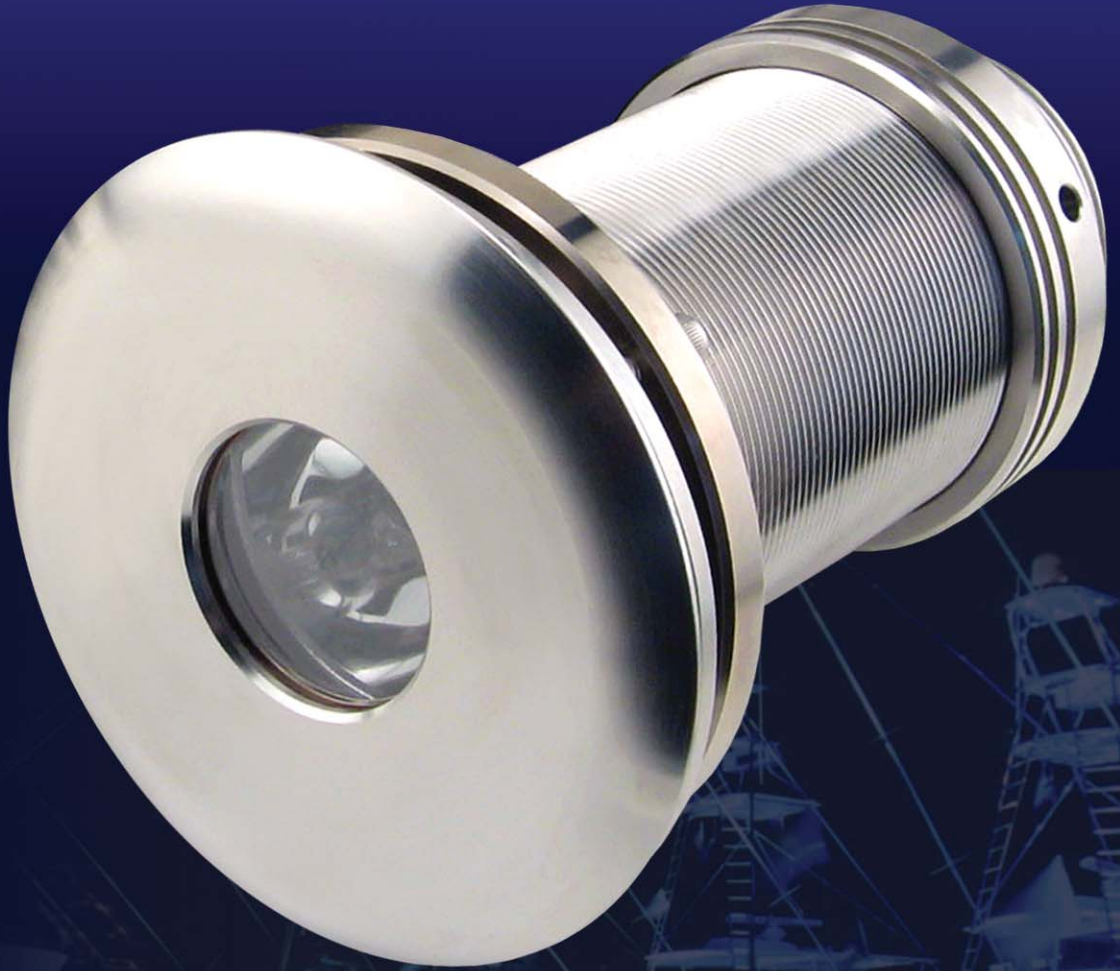


**Thru-Hull SeaLite®**

# 150W HID

- Most powerful Thru-Hull SeaLite® available
- Durable sapphire crystal port for heat transfer
- Completely serviceable from inside the boat
- Water tight fitting - front and back seals
- Various housing and ballast options



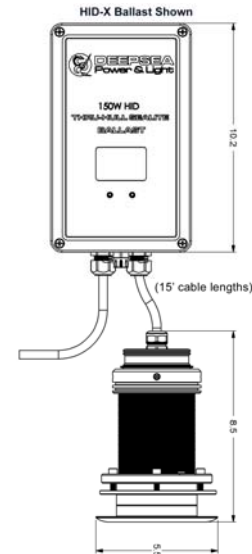
**DEEPSEA**  
Power & Light®

# HID Thru-Hull SeaLite®

The HID Thru-Hull SeaLite® is an extremely rugged system with unmatched light output. The fully sealed light head, scratch resistant sapphire port and precision-machined housing ensure that the system will remain reliable, even in the harshest environments. Each version utilizes the same thru-hull fitting and lamp, but offers ballast options to suit various installations and budgets.

- The **HID-X** is the fully outfitted version of the 150W HID that includes automatic thermal and moisture sensors and integrated fault lights. This unit comes standard with a 15-foot interconnect cable and 15-foot power cable.
- The **HID-S** version is very similar to the HID-X except that it does not include the sensors and, therefore, utilizes a smaller housing for the ballast. This unit comes standard with a 15-foot interconnect cable and 15-foot power cable.
- The **HID-O** is our OEM version intended for boat manufacturers that want to incorporate the unit into a boat design. This unit includes the ballast (without splash-proof enclosure box) and a 15-foot interconnect cable (no power cable).

The HID Thru-Hull SeaLite® provides the peace of mind in knowing that it was designed by a company with over 25 years expertise as a leading manufacturer of underwater lights for deep diving submersibles, offshore oil and commercial divers.



## Light Specifications

### MECHANICAL (Light)

Housing Material:	316L Stainless Steel or optional Titanium / 316L SS
Pressure Tested To:	100 PSI
Size:	8 3/8 in. (21.29 cm)
Length:	
Diameter:	
Thru-Hull Fitting:	3 5/8 in. (9.22 cm) with Nylon insulators, 3 1/2 in. (8.89 cm) without
Outer Flange (1/4 in. thick):	5 1/2 in. (13.97 cm)
Weight:	10 lb ( 4.54 kg)
Lens:	Single crystal synthetic sapphire
Cable Length, Light to Ballast:	15' (4.57 m) standard (longer available on request)
Recommended Hull Thickness:	
Minimum:	1/4 in. (6.35 mm)
Maximum:	4 in. (10.16 cm)

### LAMP

Type:	Metal Halide
Lamp Watts (nominal):	150 Watts
Rated Average Life:	6,000 hours
Color Temperature:	7,500° K
Beam Angle:	60°

### OPERATING

Warm-up Time to 80% of Full Output:	2 minutes
Re-Strike Time for Hot Lamp:	20 minutes typical
Minimum Operating Temperature:	-22° F (-30° C)

MECHANICAL (Ballast)	HID-X	HID-S	HID-O
Housing Material:	Powder coated aluminum ballast box	Powder coated aluminum ballast box	Ballast (without splash-proof enclosure box)
Size:			
Length:	10.24 in. (26.01 cm)	8.70 in. (22.0 cm)	5.52 in. (13.3 cm)
Width:	6.30 in. (16.00 cm)	4.75 in. (12.0 cm)	3.62 in. (9.2 cm)
Depth:	3.71 in. (9.42 cm)	3.20 in. (8.0 cm)	1.61 in. (4.1 cm)
Weight:	11 lbs (4.99 kg)	5.6 lbs (2.54 kg)	15 oz. (0.43 kg)
Cable Length, AC Input:	15' (4.57 m) standard (longer available on request)	15' (4.57 m) standard (longer available on request)	No power cable

### ELECTRICAL (All Versions)

Input Voltage:	120V model: 108V - 132V 240V model: 216V - 305V
Input Current:	Running: 1.40A at 120V 0.70A at 240V Starting: 120V model: 3A peak for 5 seconds. 240V model: 1.6A peak for 5 seconds.
Input Power:	166 Watts



Specifications subject to change without notice

DEEPSEA POWER & LIGHT • 4033 Ruffin Rd. • San Diego, CA 92123 USA • TEL (858) 576-1261 • FAX (858) 576-0219

Web: [www.deepsee.com](http://www.deepsee.com) • E-mail: [THSL\\_sales@deepsea.com](mailto:THSL_sales@deepsea.com)

Rev. 04/21/10