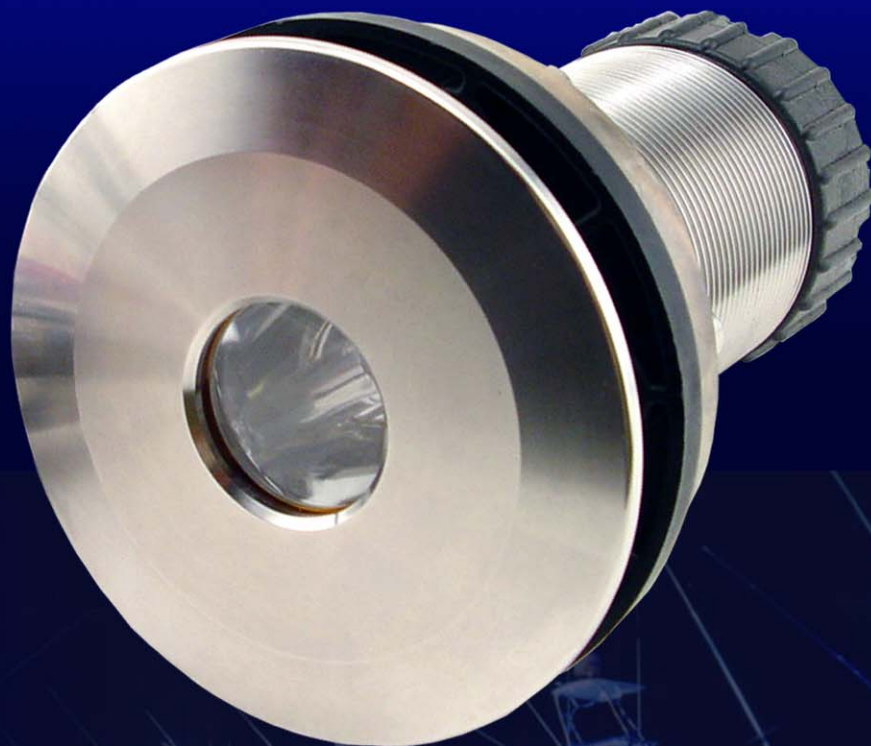


Thru-Hull SealLite®

35W Xenon

- High color temperature for brilliant white light
- Durable sapphire crystal port for heat transfer
- Water tight fitting - front and back seals
- Completely serviceable from inside the boat



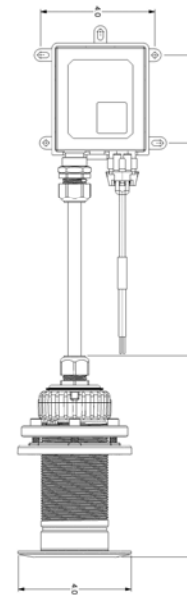
DEEPSEA
Power & Light®

Xenon Thru-Hull SeaLite®

The **Xenon Thru-Hull SeaLite®** is a low voltage, 35-Watt gas discharge light produces intense white light for maximum penetration in seawater

The **Xenon Thru-Hull SeaLites®** comes standard with unique features that set it above other Xenon lights on the market. The sapphire crystal port is used for its strength and thermal characteristics. DeepSea is the only thru-hull light company to offer this highly durable, scratch resistant material. Sapphire crystal is much more efficient at transferring heat into the water than glass, allowing the light to run cooler for improved lamp life and safety. A fully sealed design (front and back) ensures that water in your bilge does not intrude through the back of the light, and, more importantly, if the front port were ever compromised, water will not leak into your boat. In addition, the **Xenon Thru-Hull SeaLites®** uses a highly efficient reflector design, maximizing the amount of light that is transmitted from the lamp into the water and creating a nice, even dispersion of light.

The **Xenon Thru-Hull SeaLites®** provides the peace of mind in knowing that it was designed by a company with over 25 years expertise as a leading manufacturer of underwater lights for oceanographic research, offshore oil and commercial divers.



Light Specifications

MECHANICAL	
Housing Material:	316L Stainless Steel
Pressure Tested To:	100 PSI
Size:	
Length:	6.5 in. (16.51 cm)
Diameter:	
Thru-Hull Fitting:	2.34 in. (5.94 cm)
Outer Flange (1/4 in. thick):	3.95 in. (10.03 cm)
Weight:	4.5 lb. (2.04 kg)
Lens:	Single crystal synthetic sapphire
Cable Length, Light to Ballast:	10' (3 m) standard
Recommended Hull Thickness:	
Minimum:	1/4 in. (6.35 mm)
Maximum:	3 3/8 in. (8.57 cm)

LAMP	
Type:	Xenon - Metal Halide
Lamp Watts (nominal):	35 Watts
Rated Average Life:	2,000 hours
Color Temperature:	6,000° K
Typical Lumens in the water*:	1750
Beam Angle:	50°

OPERATING	
Warm-up Time to 80% of Full Output:	< 1 minute
Re-strike Time for Hot Lamp:	1 minute typical
Minimum Operating Temperature:	-22° F (-30° C)

Ballast Specifications

MECHANICAL	
Housing Material:	Die-cast aluminum
Size:	
Length (with mounting base):	5 in. (12.7 cm)
Width (with mounting base):	4.5 in. (11.43 cm)
Depth (with mounting base):	1.2 in. (3.05 cm)
Weight:	1 lb. (0.45 kg)
Cable Length, Ballast to Power:	25' (7.6 m)

ELECTRICAL	
Input Voltage:	8-32 VDC (12 VDC nominal)
Input Current:	3.5A nominal (at 12V)
Input Power:	43 Watts

OPERATING	
Minimum Operating Temperature:	-22° F (-30° C)

*True amount of light leaving the fixture, as measured with a calibrated integrating sphere.



Specifications subject to change without notice

DEEPSEA POWER & LIGHT • 4033 Ruffin Rd. • San Diego, CA 92123 USA • TEL (858) 576-1261 • FAX (858) 576-0219

Web: www.deepsee.com • E-mail: THSL_sales@deepsea.com

Rev. 01/23/09